



The importance of accurate modelling



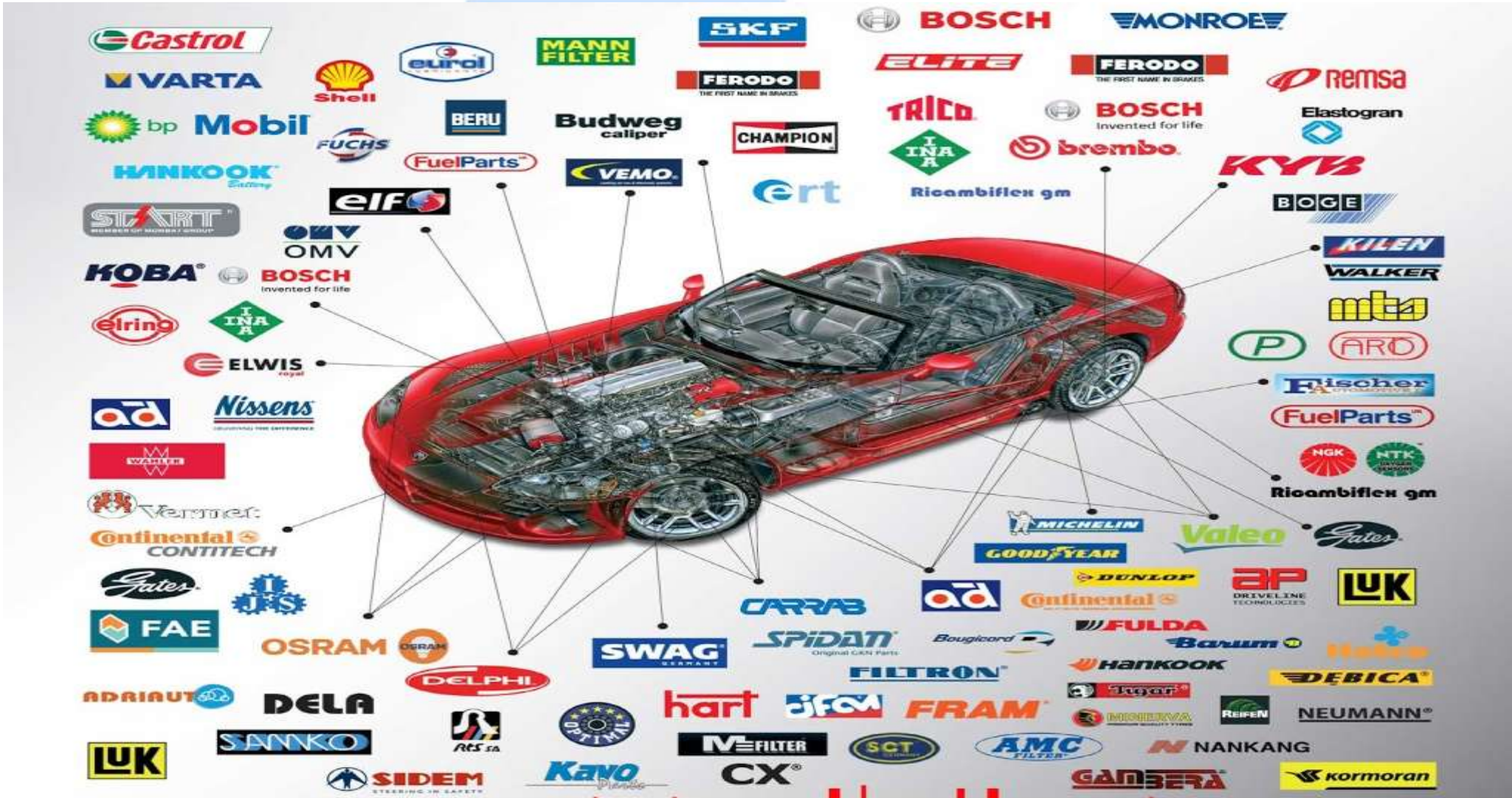
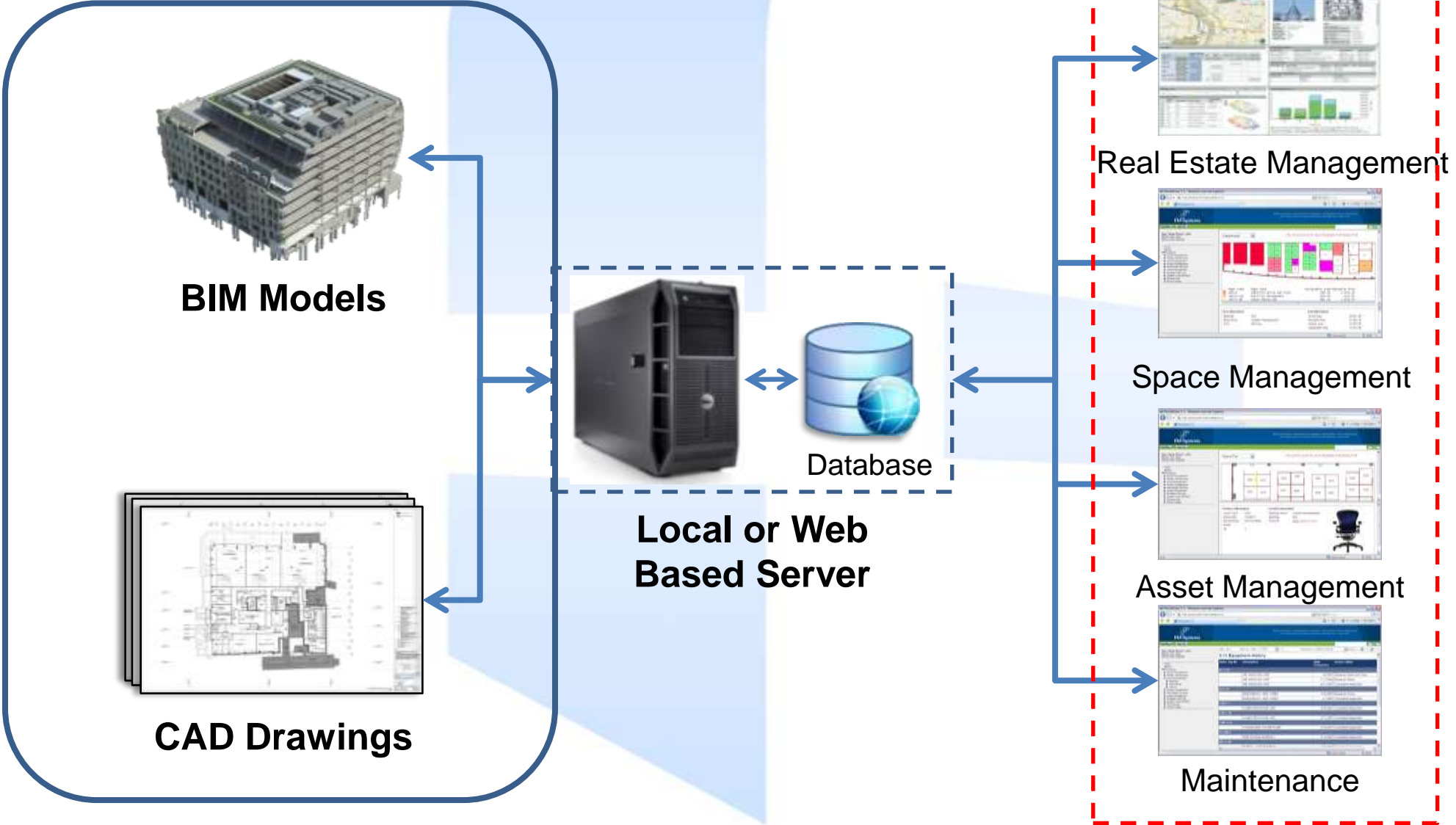




Figure 1: The Toyota Production System

Why Fulcro are presenting.

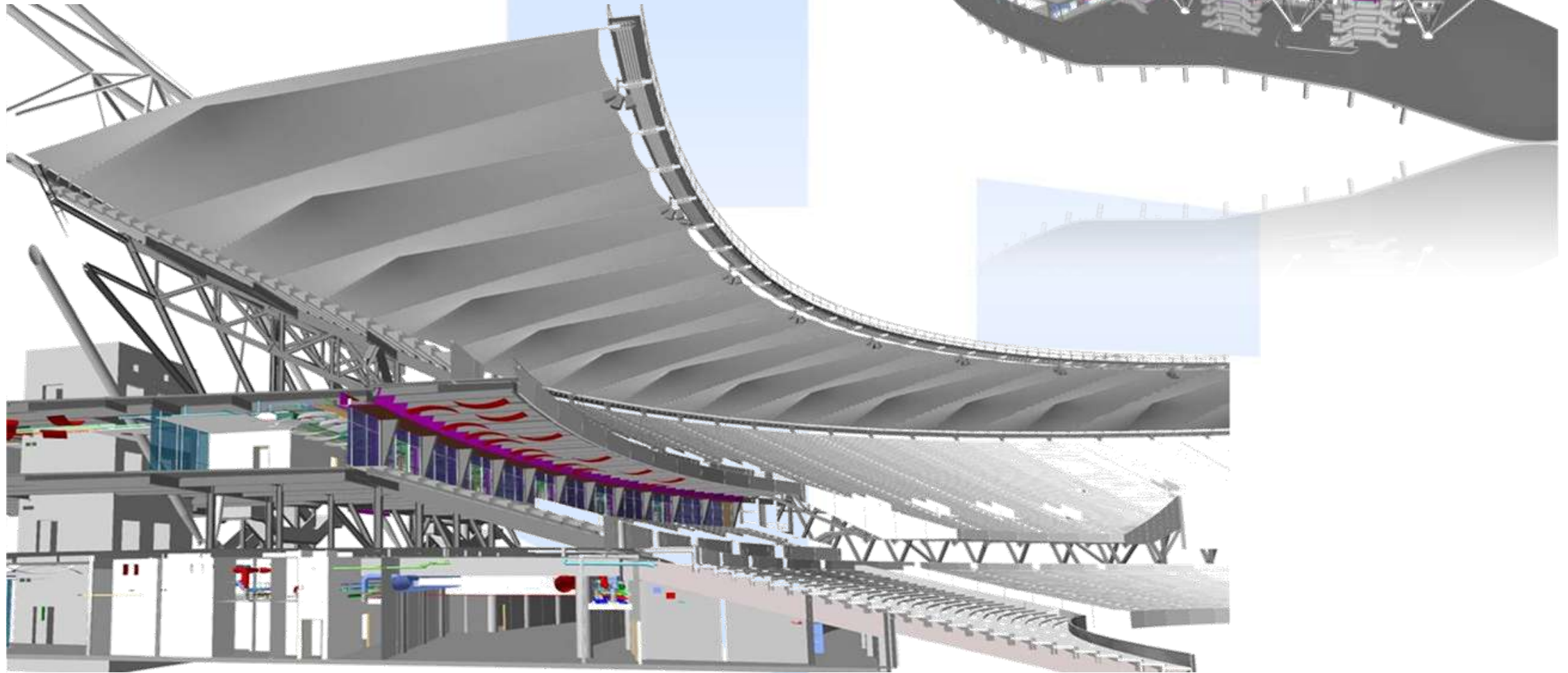






TEAM STADIUM

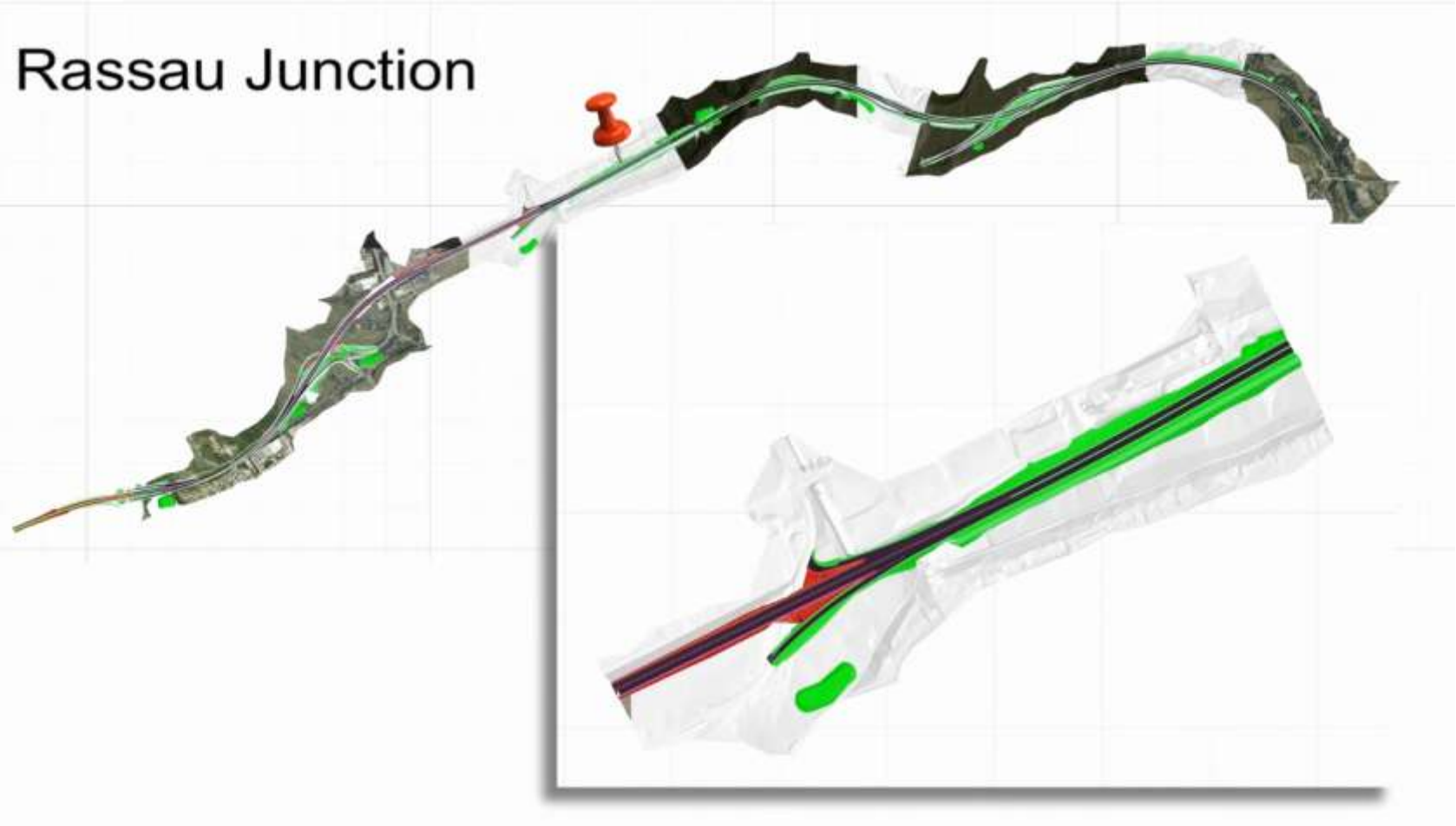
London 2012 Stadium





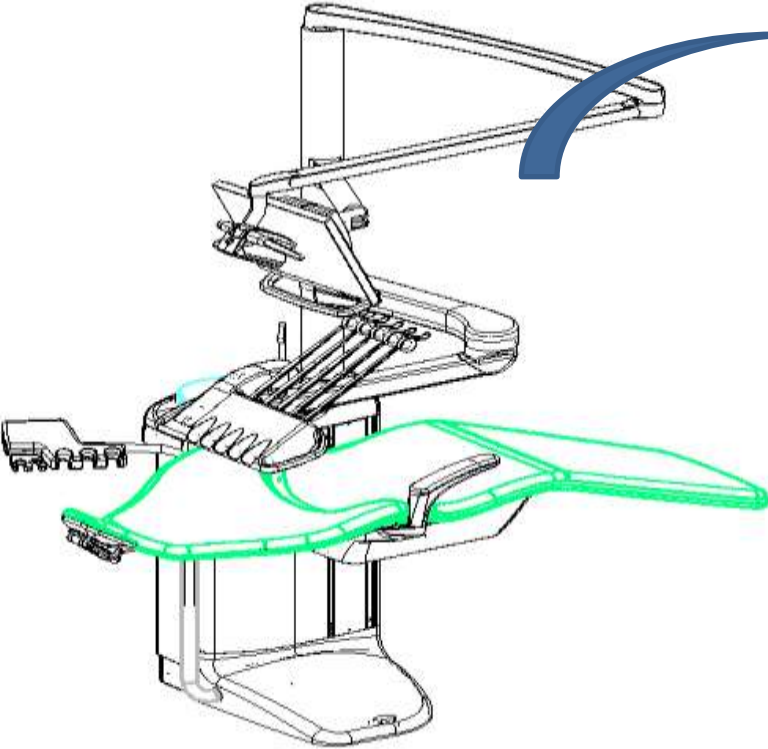
LAING O'ROURKE

North Staffordshire Hospital
Haywood Building

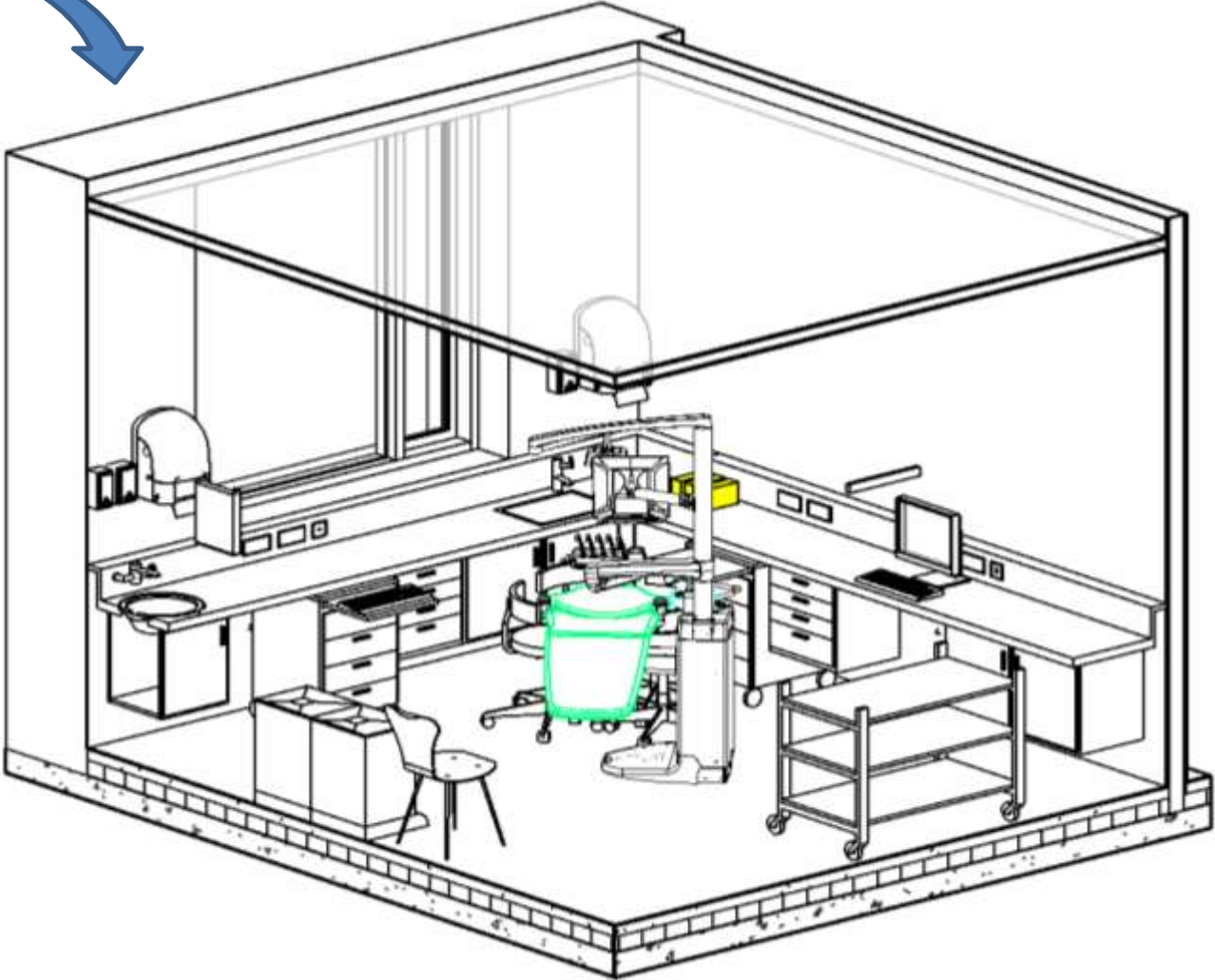


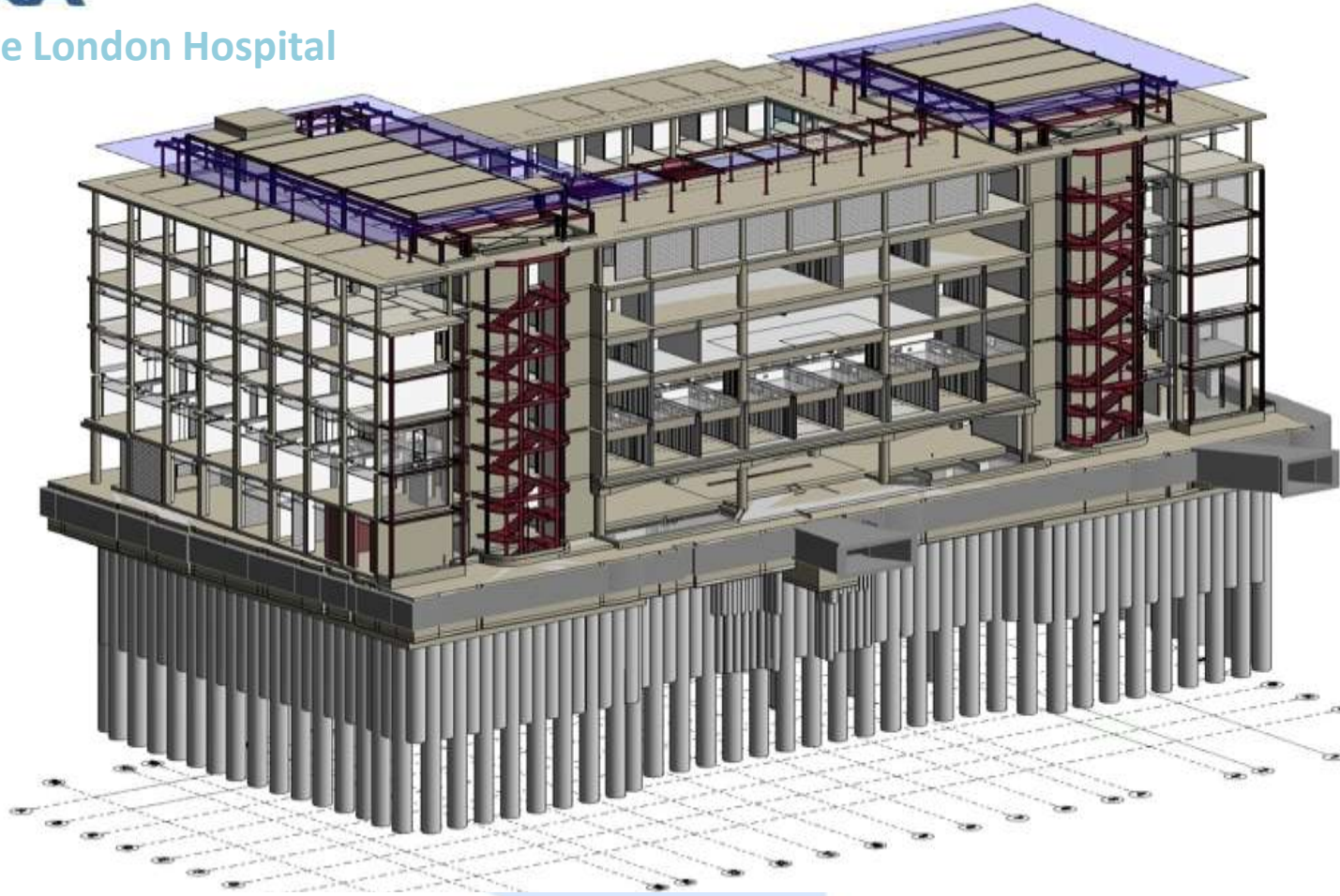


Co-ordinated FFE placed within the Architectural Model creating the typical room layouts



Intelligent 3D FFE loaded with ADB codes





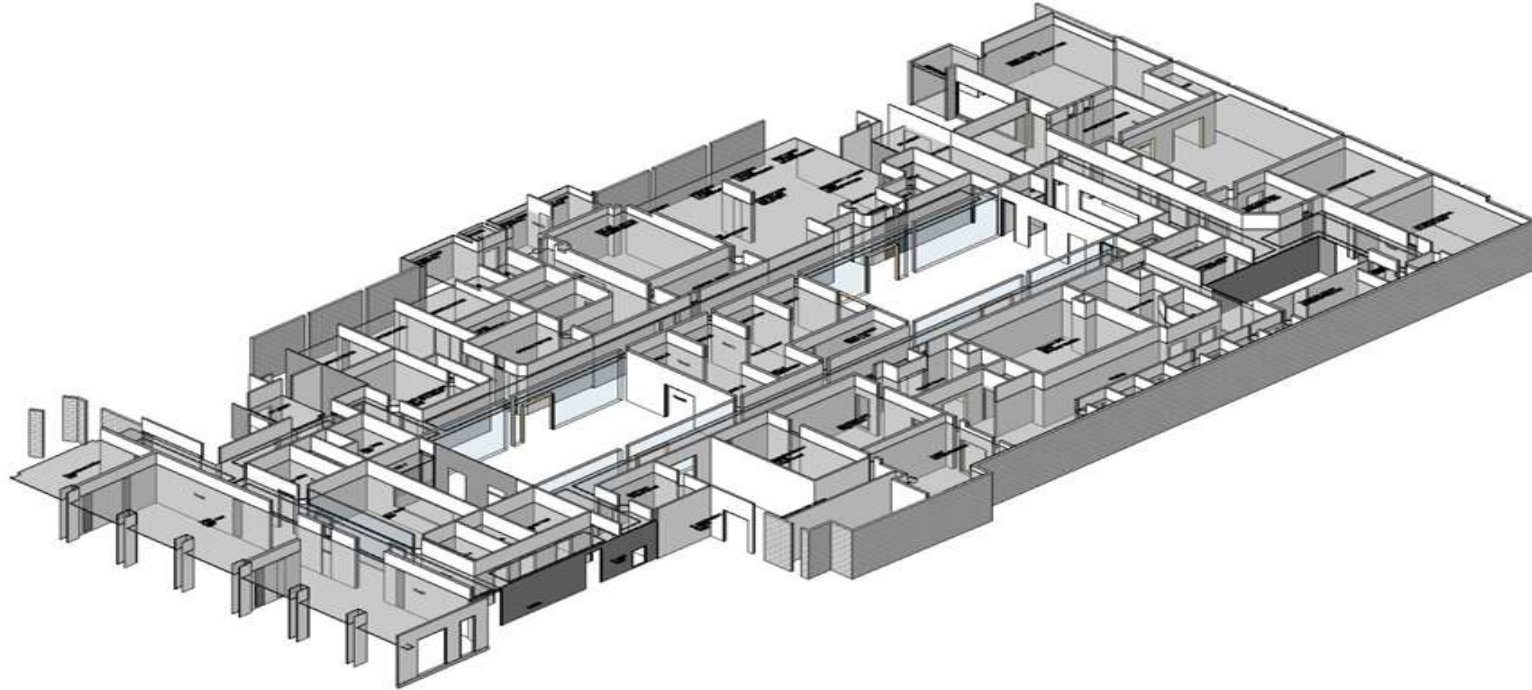
Structural and Architectural Co-ordination Model

FULCRO



SKANSKA

University College London Hospital

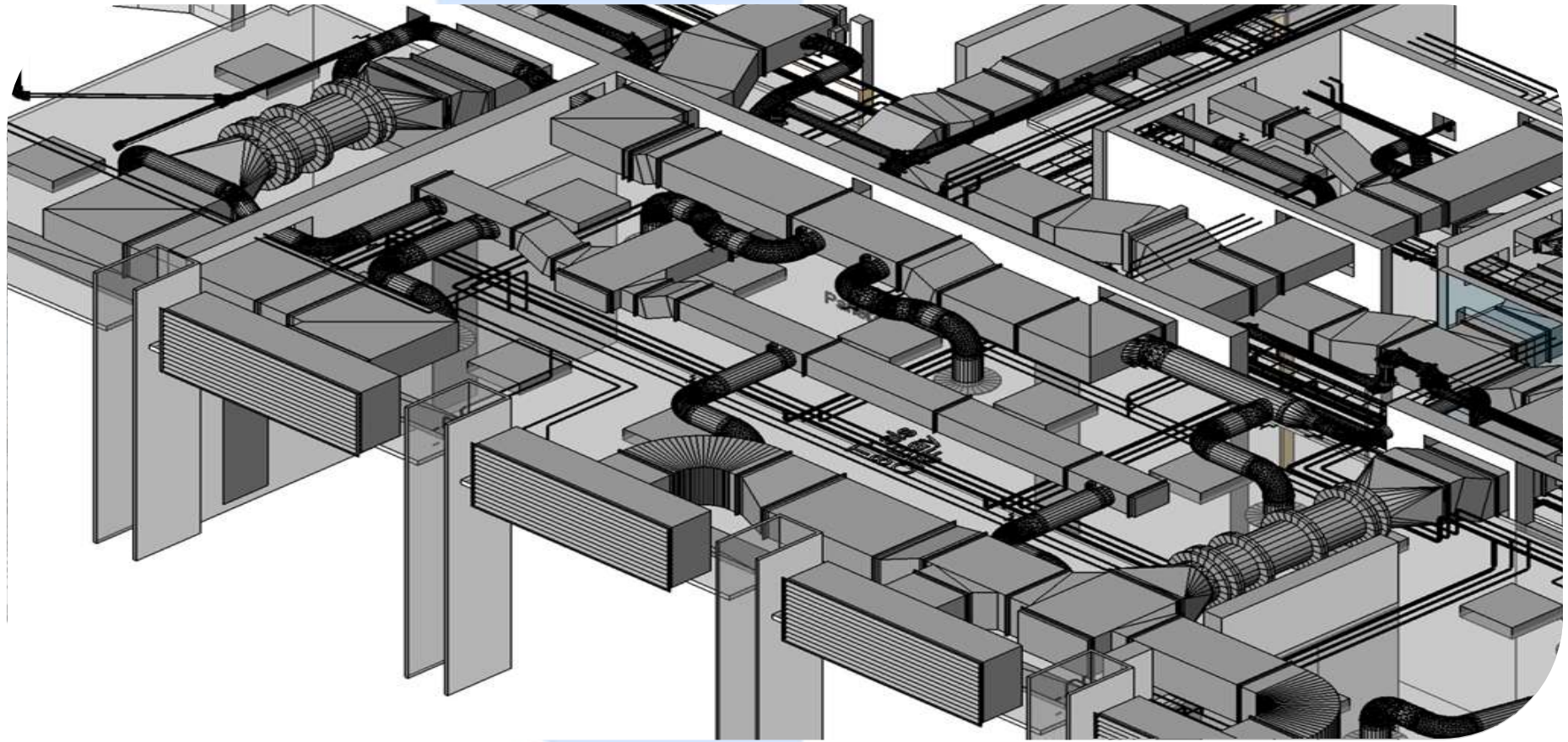


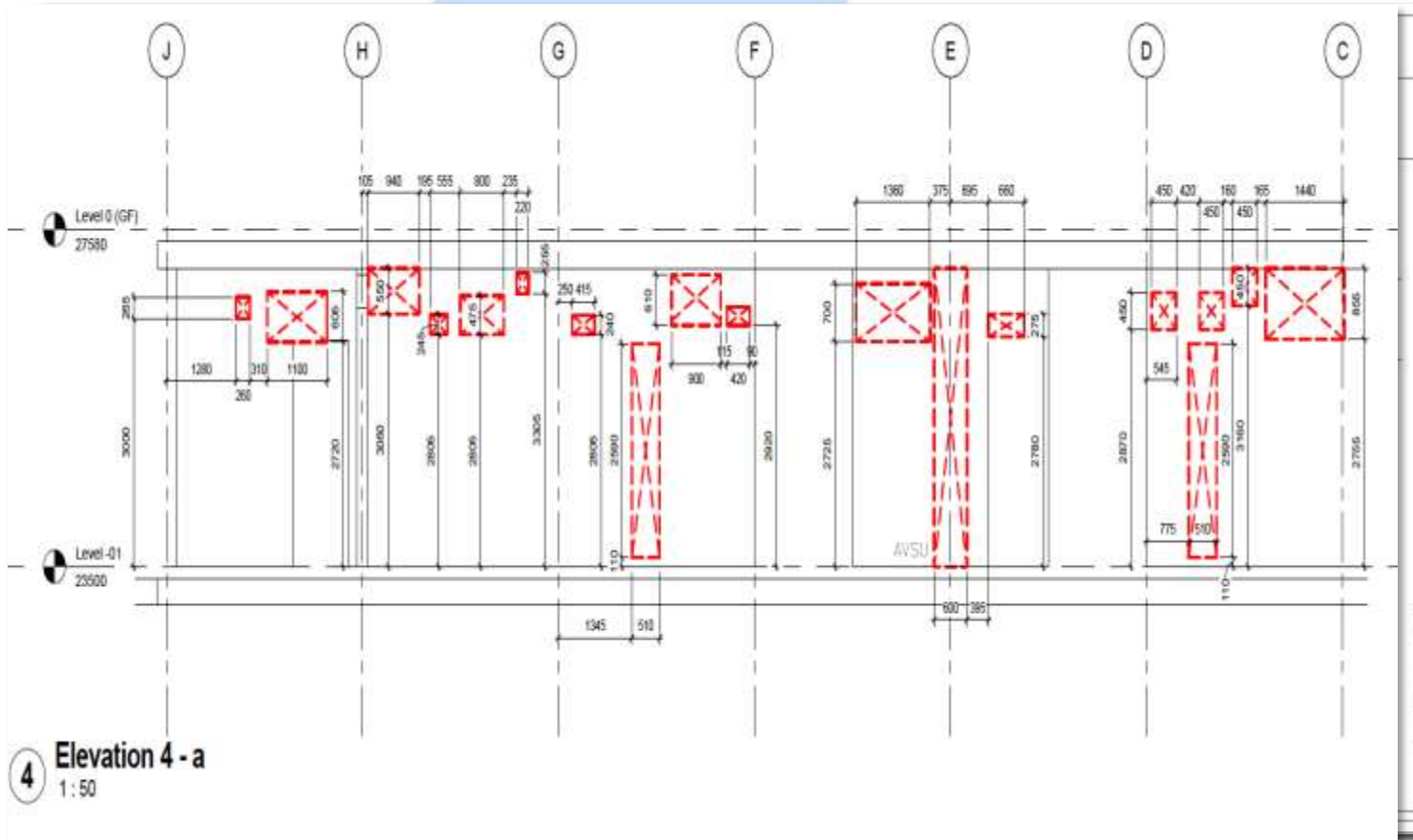
Services Imported and BW holes formed
Individual Floorplate of Co-ordination Model



SKANSKA

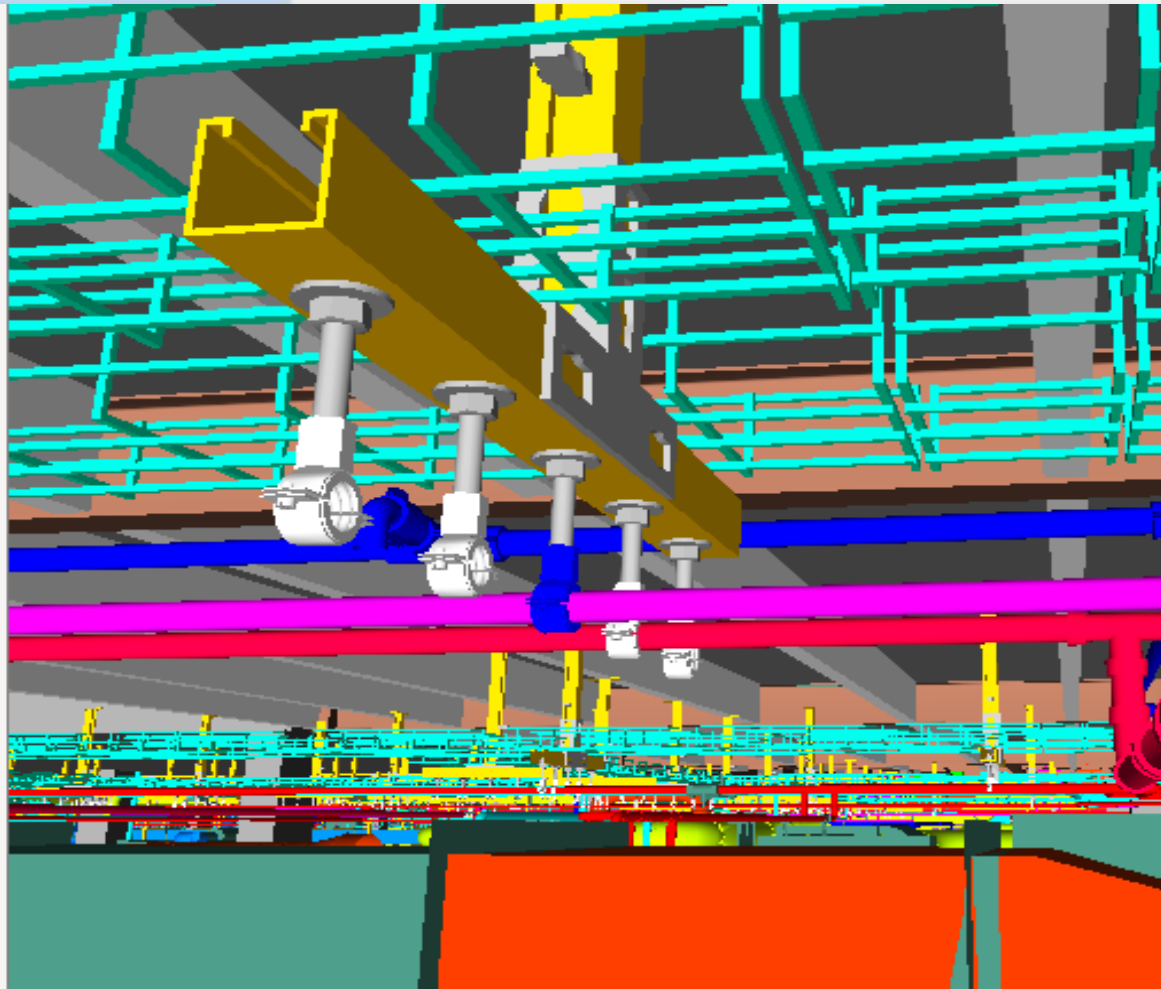
University College London Hospital





Construction Deliverables for site installation

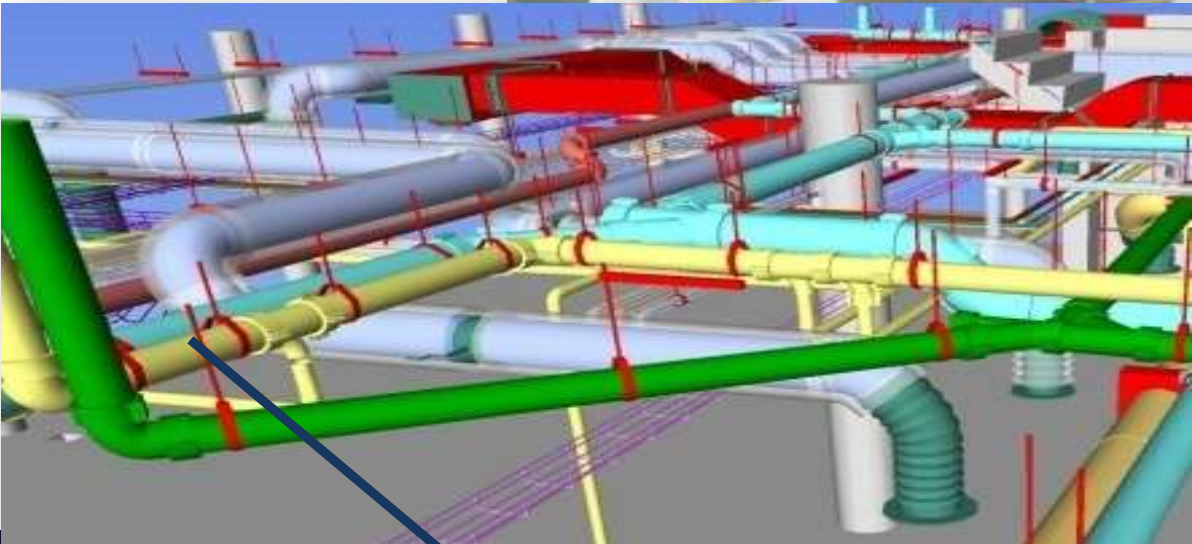
- ⊕ NUT_M10x9thick_hex16
- ⊕ WASHER_10x30x2
- ⊕ ROD_M10_001
- ⊕ NUT_M10x9thick_hex16
- ⊕ WASHER_10x30x2
- ⊕ NUT_M10x9thick_hex16
- ⊕ WASHER_10x30x2
- ⊕ ROD_M10_001
- ⊕ NUT_M10x9thick_hex16
- ⊕ WASHER_10x30x2
- ⊕ NUT_M10x9thick_hex16
- ⊕ WASHER_10x30x2
- ⊕ ROD_M10_001
- ⊕ NUT_M10x9thick_hex16
- ⊕ WASHER_10x30x2
- ⊕ NUT_M10x9thick_hex16
- ⊕ WASHER_10x30x2
- ⊕ ROD_M10_001
- ⊕ NUT_M10x9thick_hex16
- ⊕ WASHER_10x30x2
- ⊕ NUT_M10x9thick_hex16
- ⊕ WASHER_10x30x2
- ⊕ 17MM_Lined Mupro
- ⊕ **17MM_Lined Mupro**
- ⊕ 17MM_Lined Mupro
- ⊕ 17MM_Lined Mupro
- ⊕ **17MM_Lined Mupro**
- ⊕ 17MM_Lined Mupro
- ⊕ 17MM_Lined Mupro
- ut type8 (525)
- ut type8 (525)





SKANSKA

University College London Hospital





SKANSKA

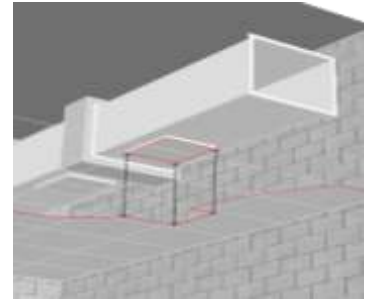
University College London Hospital





SKANSKA

University College London Hospital





The Outcome:

Information of the right **quality** delivered at the right **time** throughout the design/procurement/construction phase.

Delivered by:

The integrated, planned & managed development of a **digital prototype** asset.

Allowing:

Improved planning, control and management of construction .

Enhanced communication .

Effective resource utilisation and coordination of activities.

Reduction in costs associated with design, construction and fabrication phases.

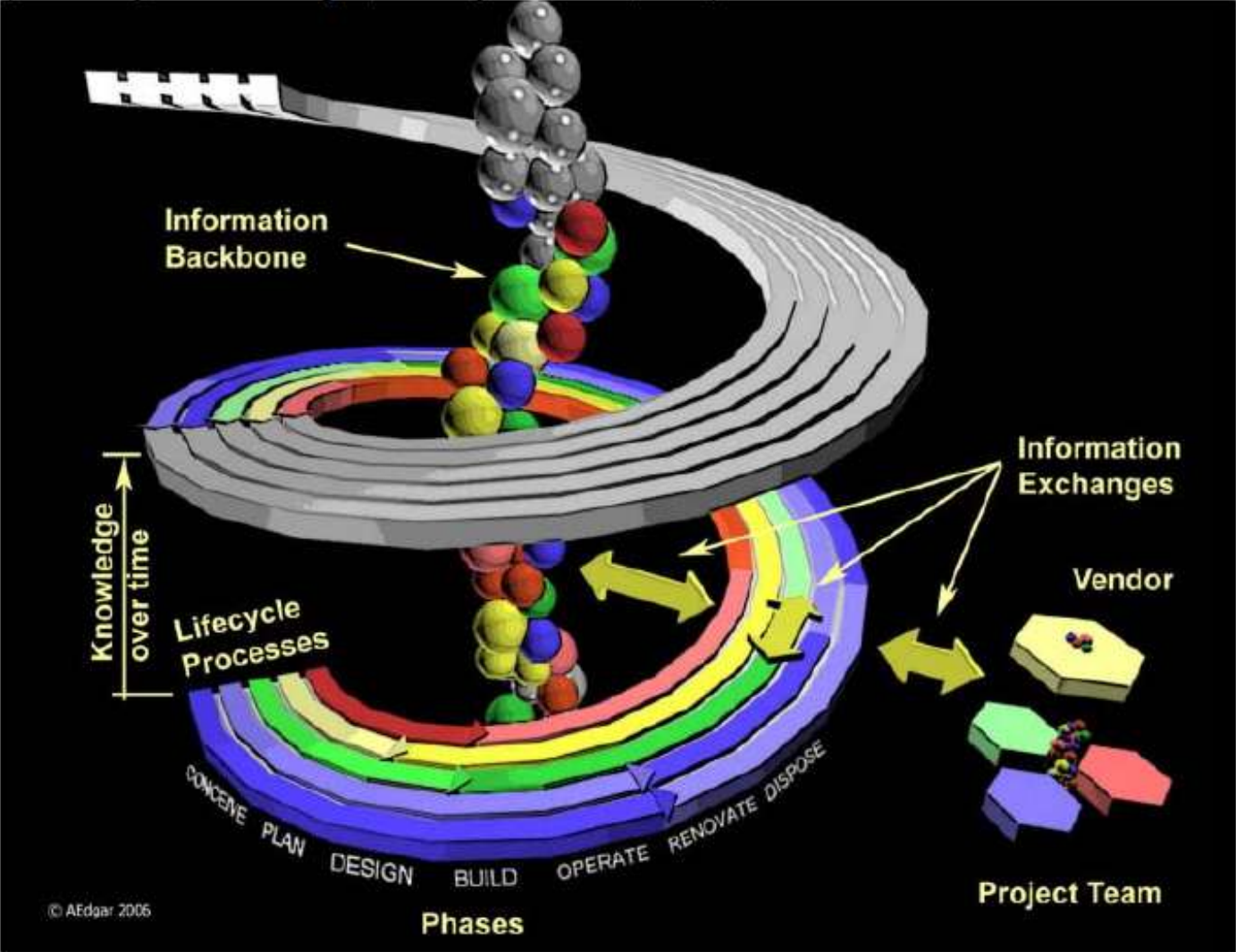
Reduction in material waste and improved sustainability.



“NOT Level 3 BIM !! IFC’s, IDM’s , IFD’s !! COBie !! Fmie “



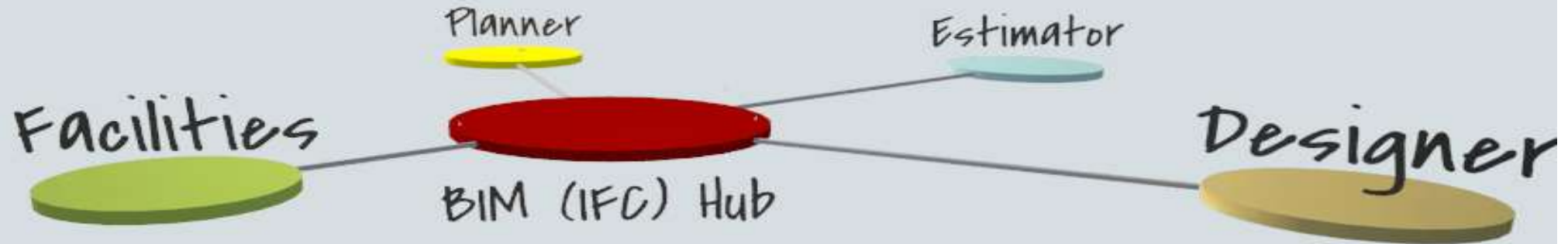
Figure 3.3-1 Facility Lifecycle BIM Repository
(Courtesy of Alan Edgar, FacilityGenetics, LLC)



Technology

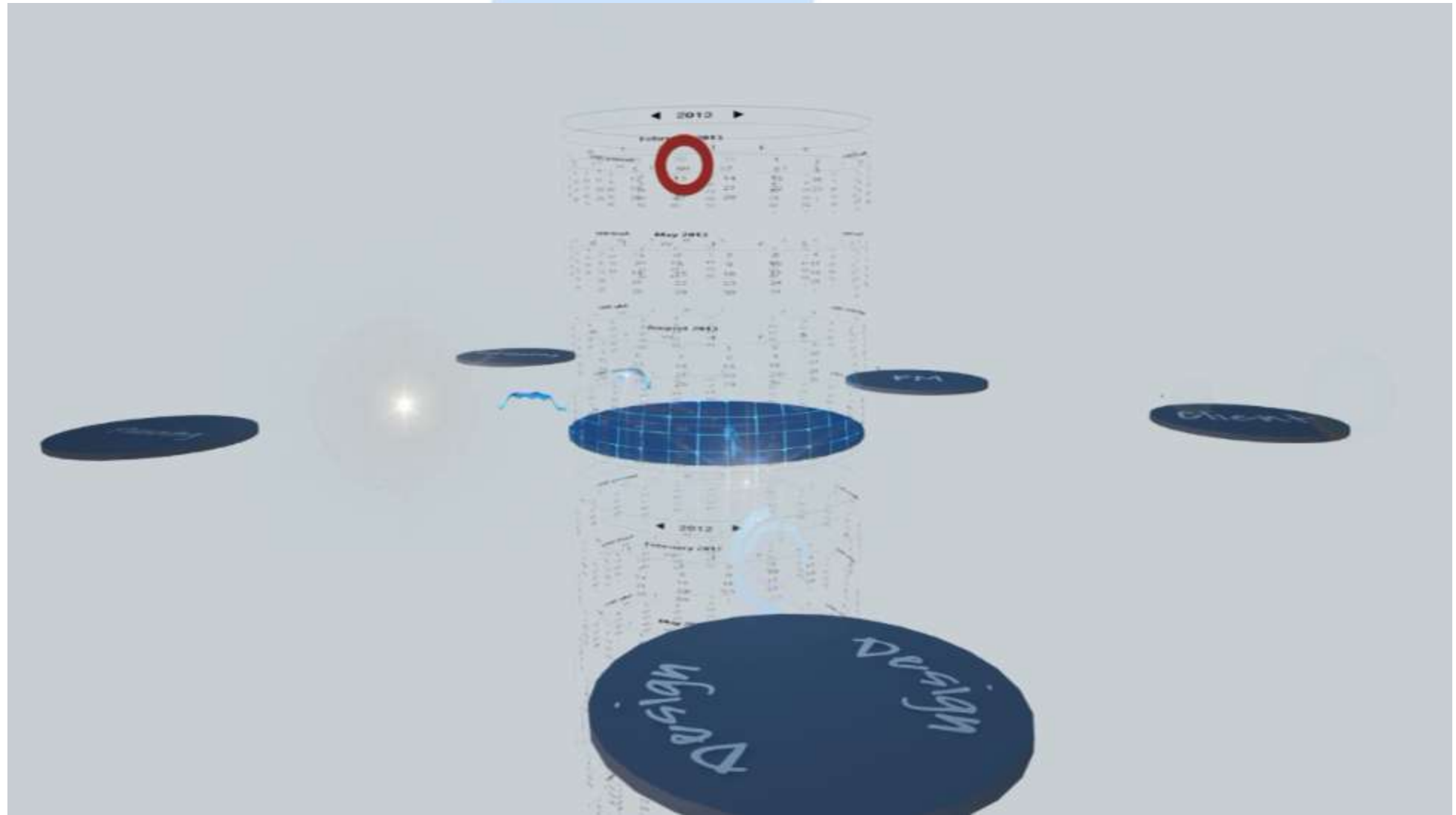
Benefit 1 - **Improved Information & process interoperability.**

All parties have access & visibility to common neutral format Information via a Hub or centralised data repository that allows for authoring, consumption, re-used & processing



Overview of system components (Web)

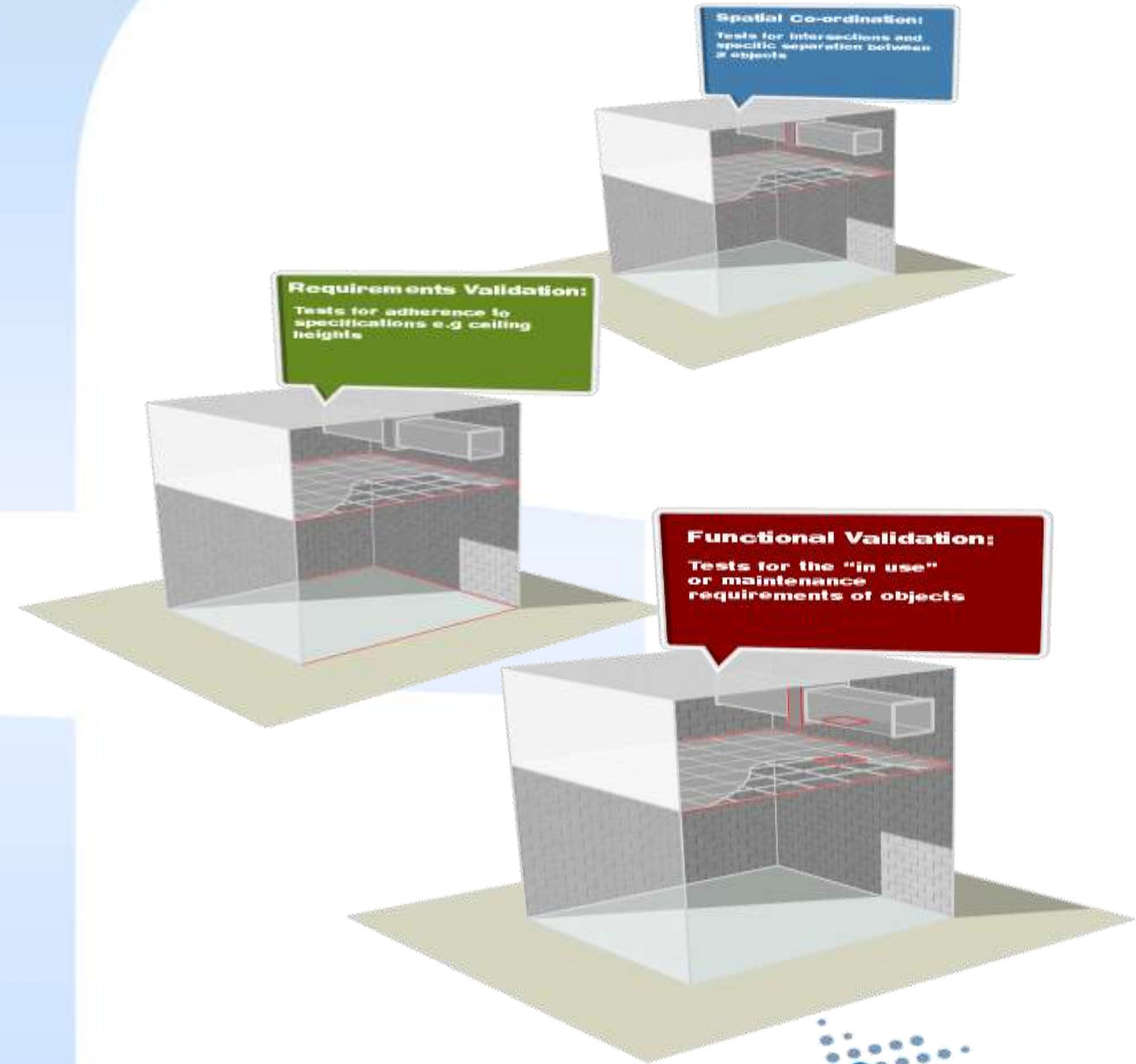
- Hub (BIM Server – Storage, Processing, Simulation)
- Nodes (Delivery roles)
- Spokes (Exchange connection)



Spatial Co-ordination – Tests for intersections and specific separations between 2 or more objects

Requirements Validation – Tests for adherence to specifications e.g. ceiling heights

Functional validation – Tests for the “in-use” or maintenance requirements of objects



Your Validation Results:

▶ ✕

Access Panel Proportionality
 Access Panel to Damper
 Access Panel to Ceiling
 Access Panel Clearance

02-04-2013
 15:38:34
 Current

7

5

Back

Detailed File Validation Results

Dudley5.IFC

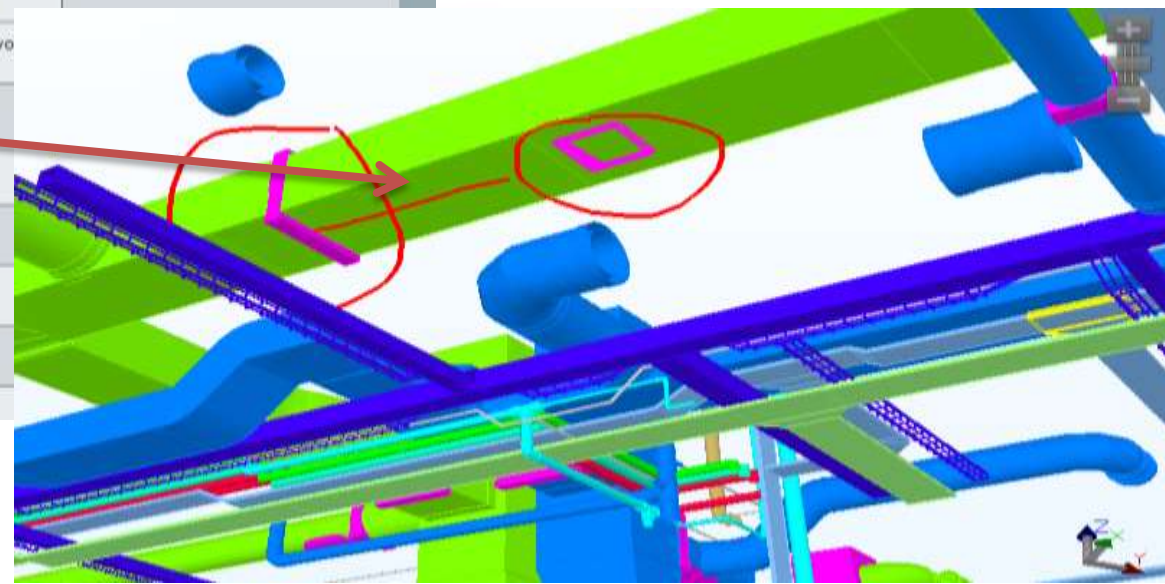
Revision Number 0

Object Reference	Validation Description	Status	Reason
#410503	Access Panel To Damper	Failure	Found an Access Panel with no Damper within 1000mm
	Grouping Ductwork to Access Panel	Warning	Found an Access Panel with no matching Ductwork

Object Reference	Validation Description	Status	Reason
#414201	Access Panel To Damper	Failure	Found a Damper with no Access Panel within 1000mm

Object Reference	Validation Description	Status	Reason
#5833	Access Panel To Damper	Failure	Found a Damper with no Access Panel within 1000mm

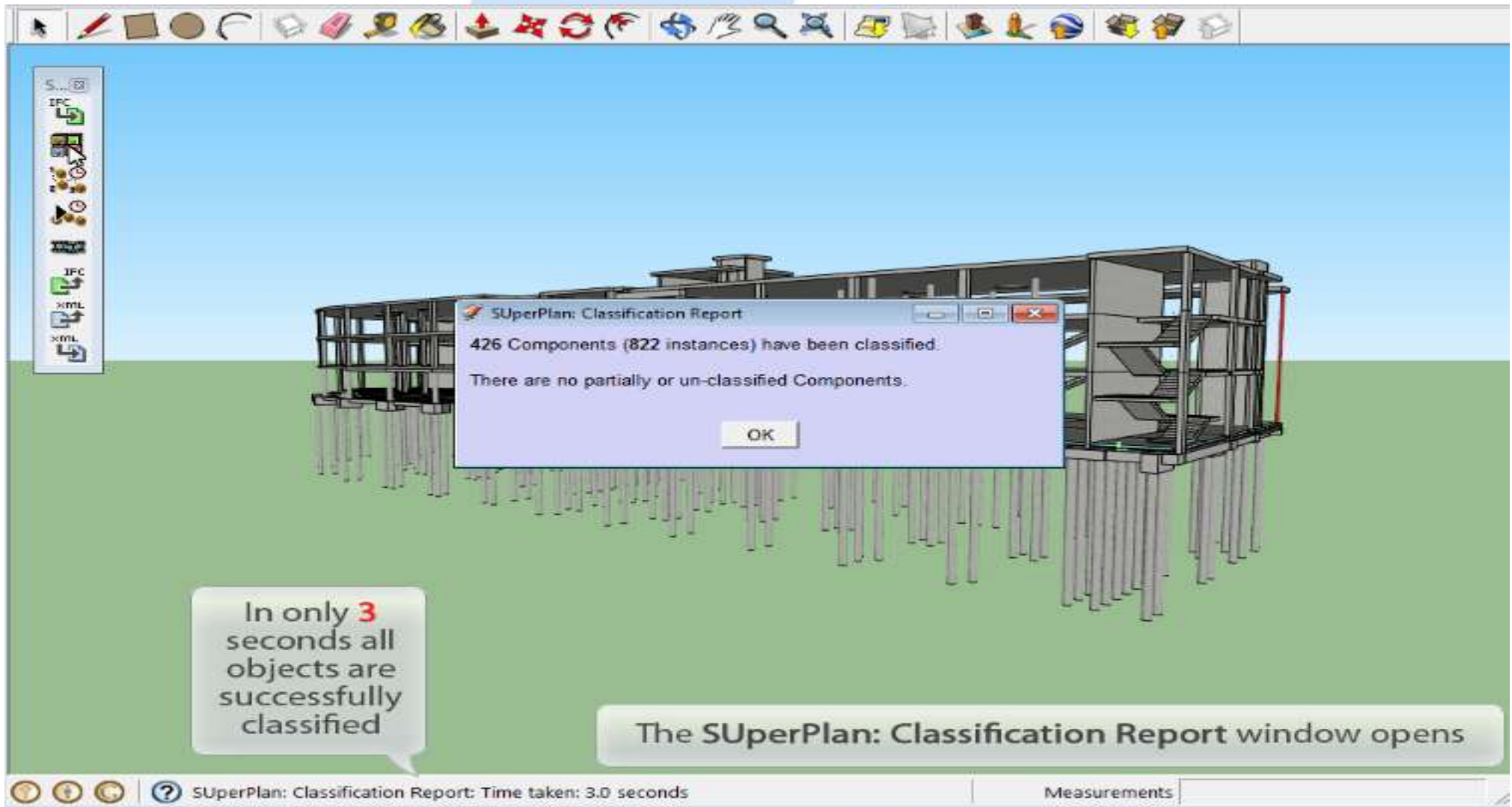
Object Reference	Validation Description	Status	Reason
#3467	Access Panel To Damper	Failure	Found a Damper with no Access Panel within 1000mm





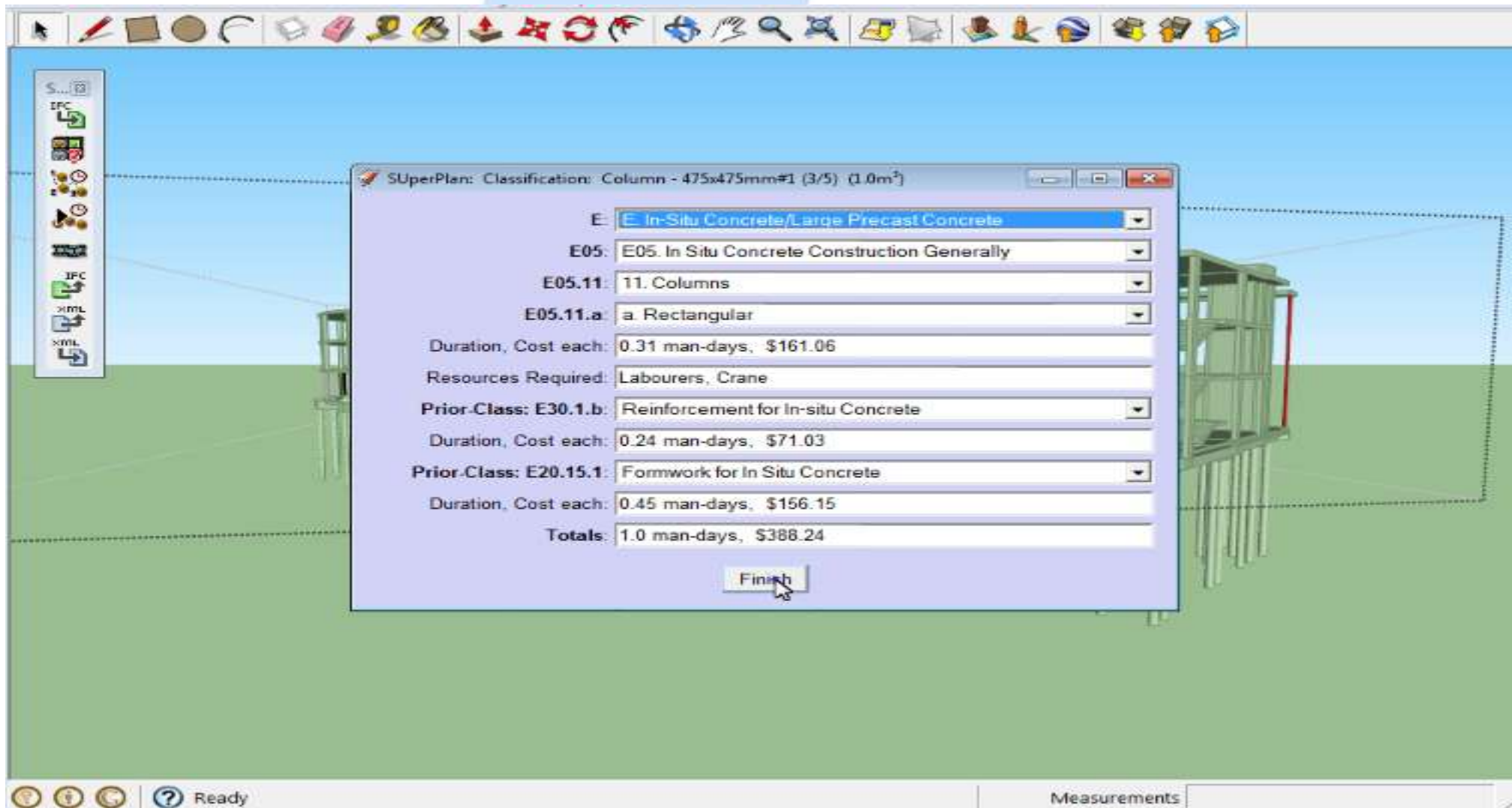
System validates objects, classifies objects, analysis construction sequence, produces 4D simulation, (NOT VISUALISATION), produces cost plan, checks for coordination.





In only **3** seconds all objects are successfully classified

The **SuperPlan: Classification Report** window opens

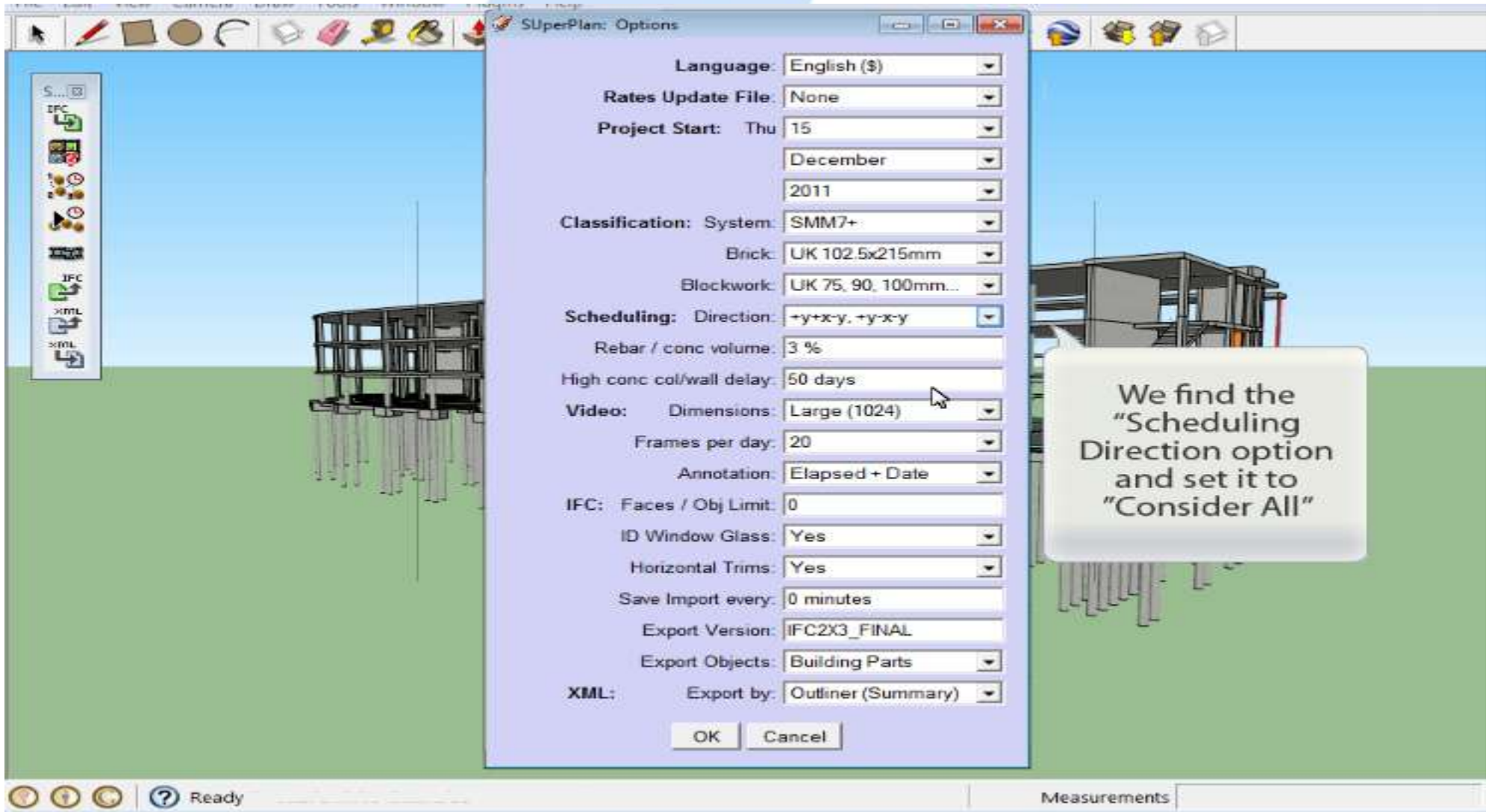


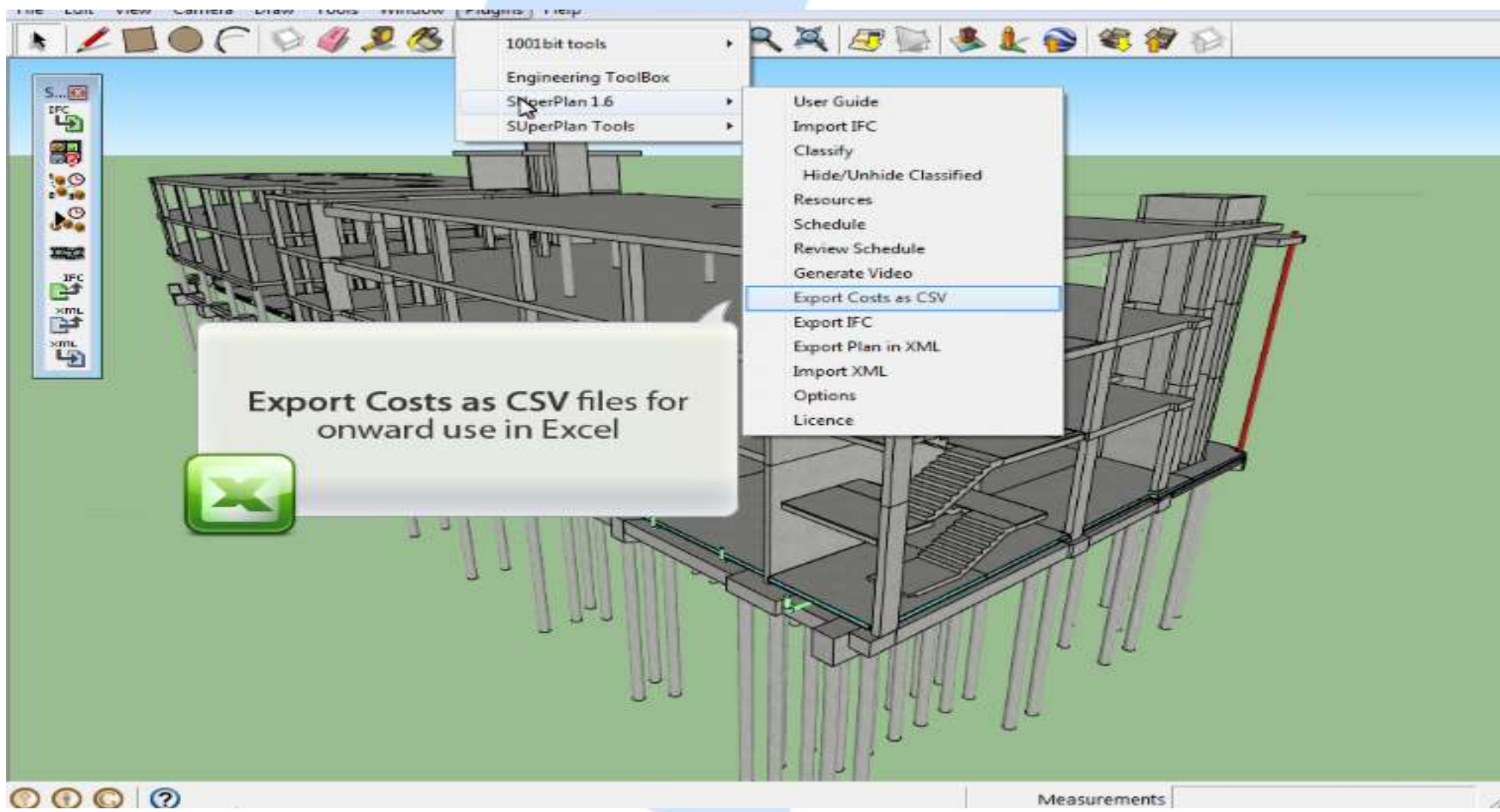
The screenshot shows a software interface with a 3D model of a building structure. A dialog box titled "SuperPlan: Classification: Column - 475x475mm#1 (3/5) (1.0m²)" is open, displaying classification details and resource requirements.

Classification Level	Item	Duration, Cost each
E	In-Situ Concrete/Large Precast Concrete	
E05	In Situ Concrete Construction Generally	
E05.11	11. Columns	
E05.11.a	a. Rectangular	
	Duration, Cost each:	0.31 man-days, \$161.06
	Resources Required:	Labourers, Crane
Prior-Class: E30.1.b	Reinforcement for In-situ Concrete	
	Duration, Cost each:	0.24 man-days, \$71.03
Prior-Class: E20.15.1	Formwork for In Situ Concrete	
	Duration, Cost each:	0.45 man-days, \$156.15
Totals:		1.0 man-days, \$388.24

Buttons: Finish

System tray: Ready, Measurements





SuperPlan: Review Schedule
List Cur Wed May 16 2012 105/213days ±3
SvSc + |< < - + > >| Exit

Every object reports the objects it is dependent on and those dependent on it

Select objects. Shift to extend select. Drag mouse to select multiple. Measurements



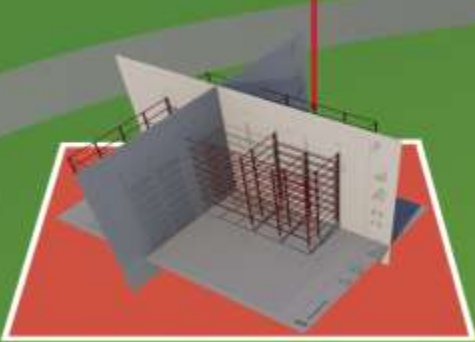


BIM.. greater than the sum of its parts...

Disjointed
Designs costly to produce and interpret



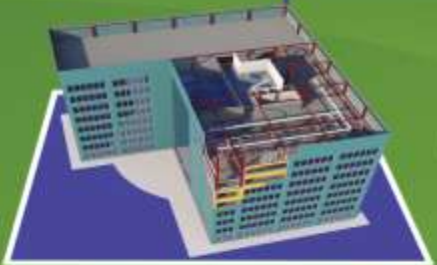
Disparate
Variety of 2D and 3D lacking uniformity



Connected
3D design in mini BIM's employing uniform data standards



Integrated
3D designs stored as a unified BIM



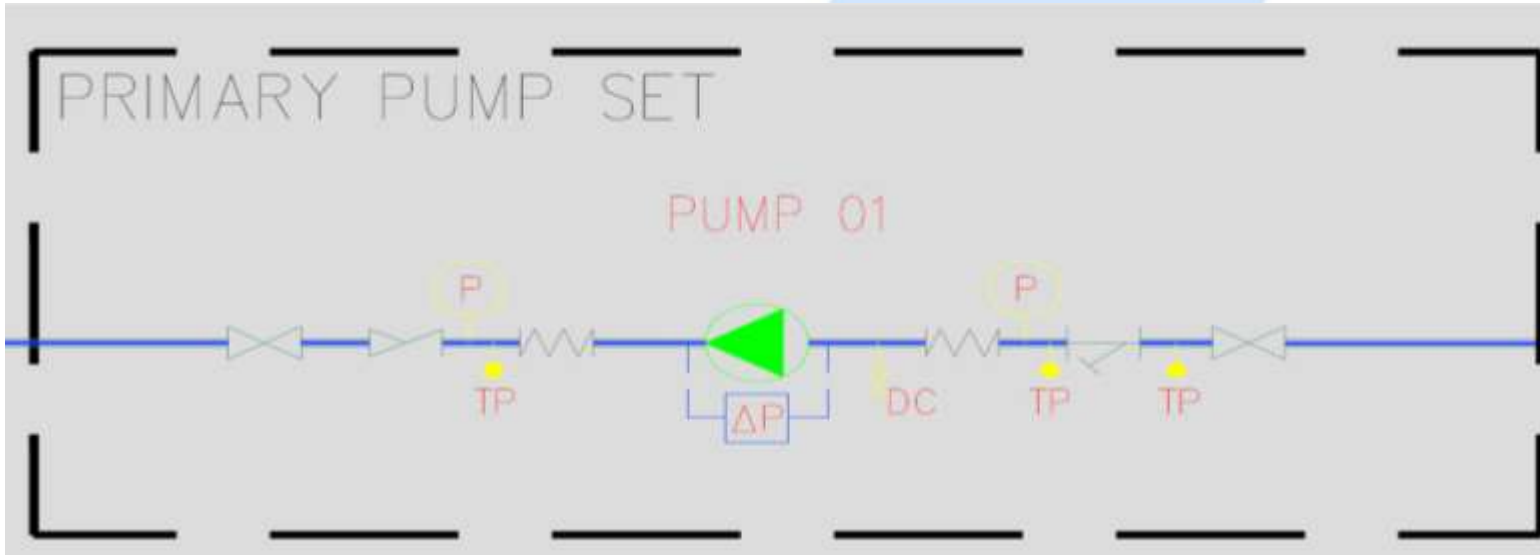


Sydney Camm joined the Hawker Aircraft Company (later Hawker Siddeley) at Kingston upon Thames as a senior **draughtsman**

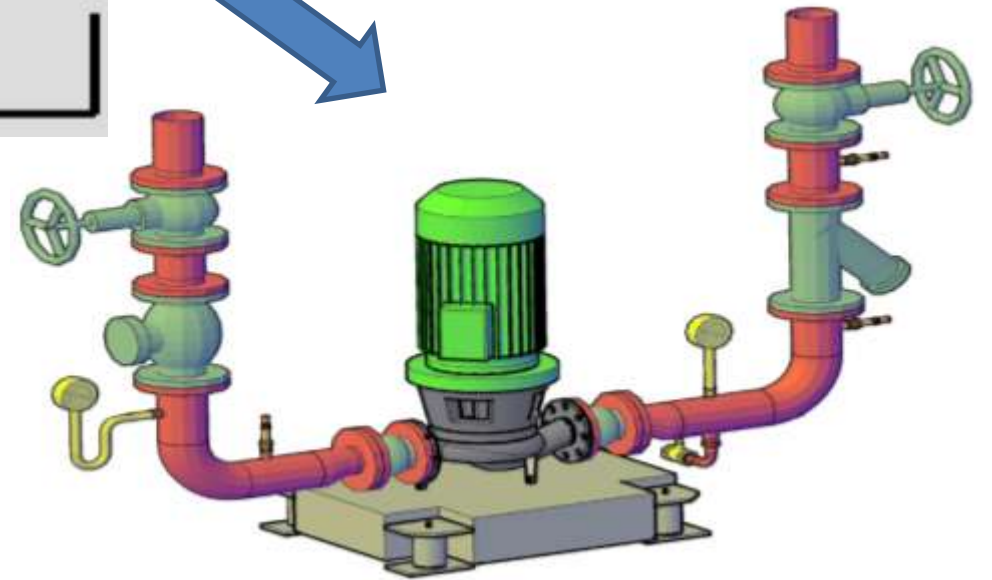


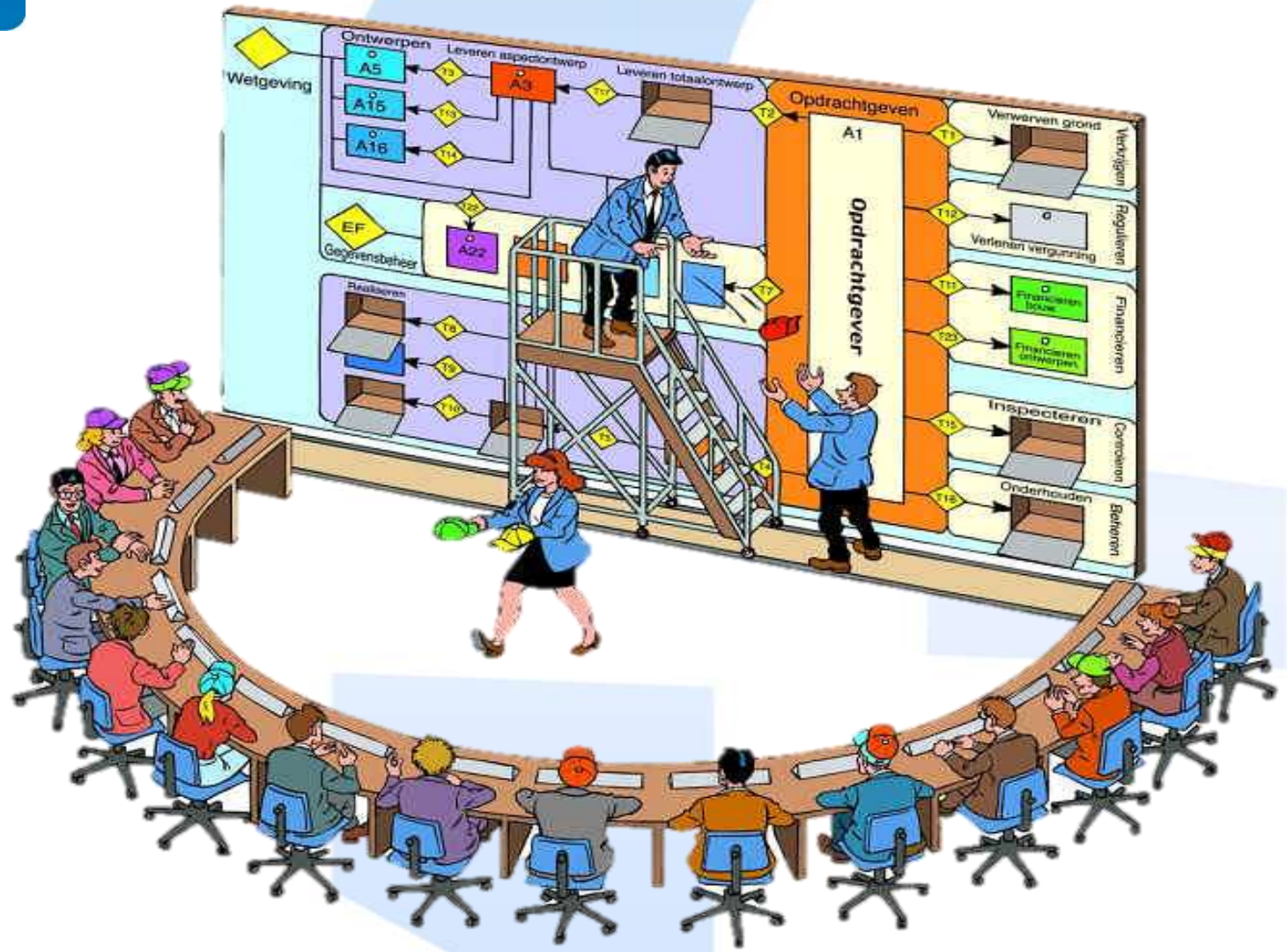
Mitchell worked in the **drawing office** at Kerr Stuart and studied engineering and mathematics at night school.

Assembly of a Pump Set Information



- Who educates designers why a valve set is placed in vertical
- Space, Access to equipment, do strainers work better in vertical, physical product specification design, etc..





Moving business processes towards BIM



“There are no short cuts with BIM, its Business Change”

FULCRO



Ben Haldin

ben.haldin@fulcro.co.uk